

I wolf

house

forest

3 bears

# Venn Diagrams

Compare and contrast two things with a Venn Diagram using Post-it® Notes and Easel Pads

## Supplies Needed:

Post-it® Notes, Post-it® Easel Pads, markers & dry erase markers



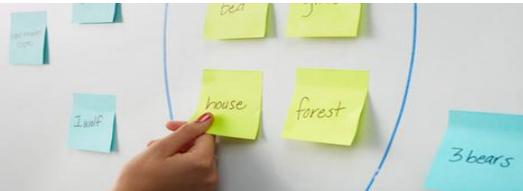
01

Draw a Venn diagram on the whiteboard using two circles that overlap. Label each circle "Differences" and the space overlapping in the middle as "Similarities."



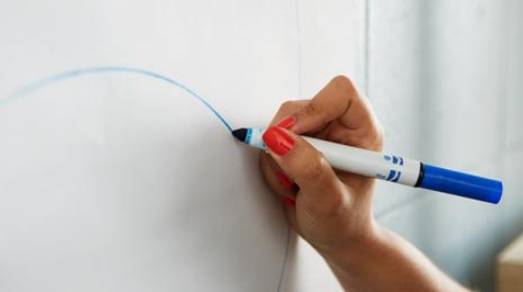
02

Use Post-it® Super Sticky Notes to write the names of two fairy tales on the board so the students can identify the similarities and differences in both stories using colored Post-it® Super Sticky Notes.



03

Next, break students into groups of three to four to make a Venn Diagram Chart using Post-it® Easel Pad on two stories that they are reading in class.



# 04

Explain/discuss how a Venn diagram can be used to recognize, list and understand similarities and differences in both stories.

